

Piezo Siren

KPE-1200Q

(RoHS)

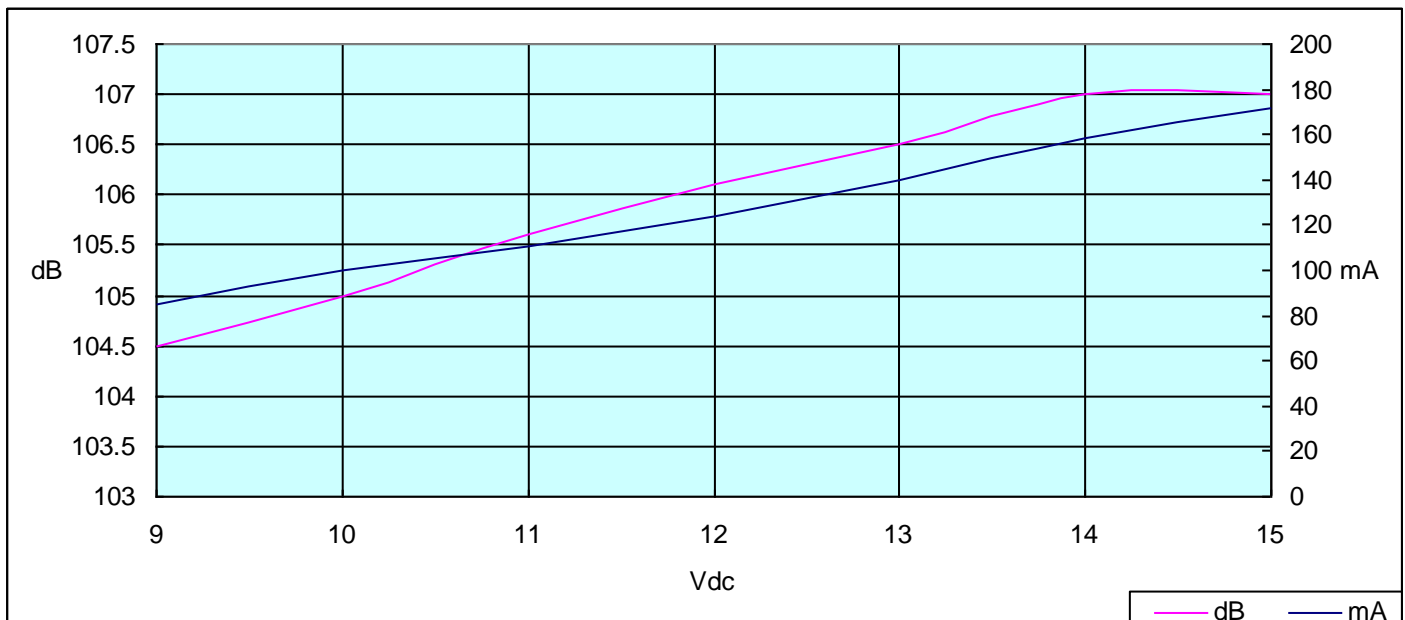
DATE:2009.07.15

1 . Electrical Characteristics

VER :4

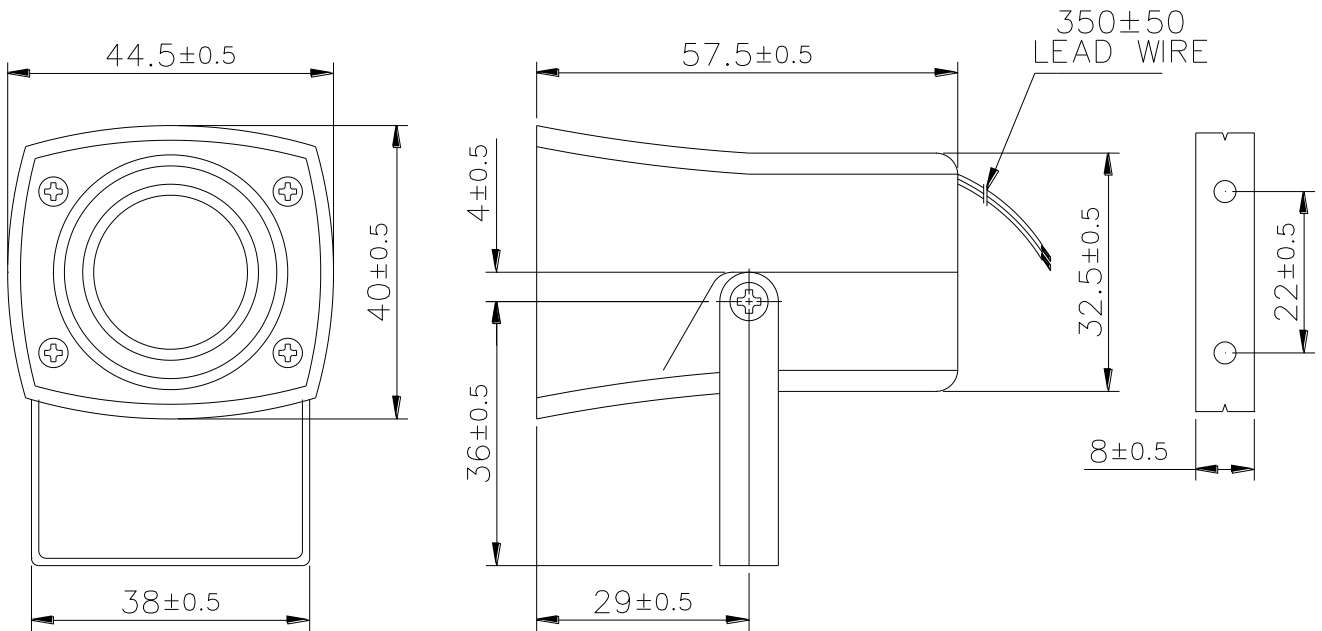
Resonant Frequency (KHz)	2.9±0.5
Operating Voltage (VDC)	9 ~ 15
Rated Voltage (VDC)	12
Current Consumption (mA/max.)	200 at Rated Voltage
Sound Pressure Level (dB/min)	105 at 100cm at Rated Voltage
Tone/Pulse Rate (Hz)	Sweep 4.5
Operating Temperature (°C)	-20 ~ +70
Storage Temperature (°C)	-30 ~ +80

2 . Typical Frequency Response Curve



3 . Dimensions and Material

3-1 Shape



Unit : mm

3-2 Material

Housing	ABS 757 UL94HB plastic resin (Color : Black)
Leading Wire	Lead Wire (Red + Black)
Weight (Gram)	1.2



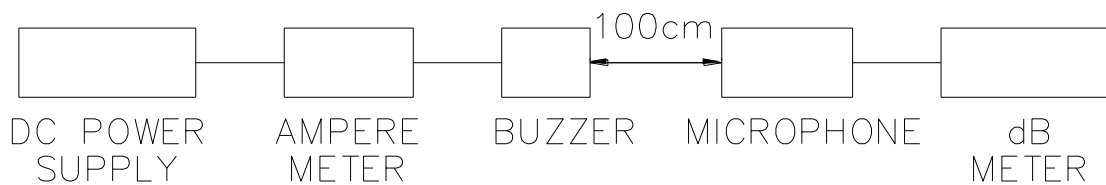
4. TESTING METHOD

- **Standard Measurement conditions**

Temperature: $25 \pm 2^\circ\text{C}$ Humidity: 45-60%

- **Acoustic Characteristics**

The oscillation frequency, current consumption and sound pressure are measured by the measuring instruments shown below.



5. RELIABILITY

ITEMS	METHOD OF TEST AND MEASUREMENTS	PERFORMANCE
<i>Coldness withstanding</i>	<i>After 98 hours of being exposed to -30°C environment, should be returned to normal environment for 2 hours, then re-proceed to test.</i>	<i>No abnormality shall exist</i>
<i>Hotness withstanding</i>	<i>After 98 hours of being exposed to $+80^\circ\text{C}$ environment, should be returned to normal environment for 2 hours, then re-proceed to test.</i>	<i>No abnormality shall exist</i>
<i>Humidity withstanding</i>	<i>After 98 hours of being exposed to 40°C 95%RH environment in actual operation, should be returned to normal environment for 2 hours, then re-proceed to test.</i>	<i>No abnormality shall exist</i>
<i>Durability</i>	<i>Testing after 1,000 hours actual continuous operation. (at standard measurement conditions)</i>	<i>No abnormality shall exist</i>
<i>Drop withstanding</i>	<i>A natural drop from 75cm high down to the ground.</i>	<i>No abnormality shall exist</i>
<i>Vibration</i>	<i>Vibration of 2,000 cycles per minute, 2mm</i>	<i>No abnormality</i>

<i>withstanding</i>	<i>amplitude, applied in X, Y and Z directions for 30 minutes each.</i>	<i>shall exist</i>
---------------------	---	--------------------

6. PACKAGE METHOD

<1> 10pcs per box , Total 25 boxes per carton , total 250pcs carton;

Volume: L*W*H=520*335*290mm.

<2>N . W . : 0.3KGS ; G . W . : 1.5KGS ;

<3> RoHS Mark:

